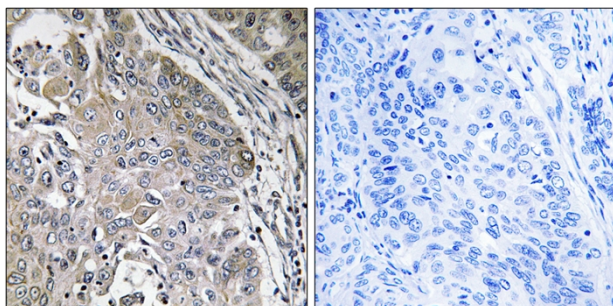




# SPINK6 Polyclonal Antibody

|                                  |  |
|----------------------------------|--|
| <b>Catalog No</b>                | YP-Ab-13963  |
| <b>Isotype</b>                   | IgG  |
| <b>Reactivity</b>                | Human;Rat;Mouse;   |
| <b>Applications</b>              | IHC;IF;ELISA   |
| <b>Gene Name</b>                 | SPINK6   |
| <b>Protein Name</b>              | Serine protease inhibitor Kazal-type 6   |
| <b>Immunogen</b>                 | The antiserum was produced against synthesized peptide derived from human SPINK6. AA range:13-62   |
| <b>Specificity</b>               | SPINK6 Polyclonal Antibody detects endogenous levels of SPINK6 protein.  |
| <b>Formulation</b>               | Liquid in PBS containing 50% glycerol, 0.5% BSA and 0.02% sodium azide.  |
| <b>Source</b>                    | Polyclonal, Rabbit,IgG   |
| <b>Purification</b>              | The antibody was affinity-purified from rabbit antiserum by affinity-chromatography using epitope-specific immunogen.  |
| <b>Dilution</b>                  | IHC: 1/100 - 1/300. ELISA: 1/40000.. IF 1:50-200   |
| <b>Concentration</b>             | 1 mg/ml  |
| <b>Purity</b>                    | ≥90%   |
| <b>Storage Stability</b>         | -20°C/1 year   |
| <b>Synonyms</b>                  | SPINK6; Serine protease inhibitor Kazal-type 6; Kallikrein inhibitor   |
| <b>Observed Band</b>             |  |
| <b>Cell Pathway</b>              | Secreted .   |
| <b>Tissue Specificity</b>        | Skin,  |
| <b>Function</b>                  | function:Probable serine protease inhibitor.,similarity:Contains 1 Kazal-like domain.,   |
| <b>Background</b>                | The protein encoded by this gene is a Kazal-type serine protease inhibitor that acts on kallikrein-related peptidases in the skin. Two transcript variants the same protein have been found for this gene. [provided by RefSeq, Aug 2010], |
| <b>matters needing attention</b> | Avoid repeated freezing and thawing!   |
| <b>Usage suggestions</b>         | This product can be used in immunological reaction related experiments. For more information, please consult technical personnel.  |

## Products Images



Immunohistochemistry analysis of paraffin-embedded human lung carcinoma, using SPINK6 Antibody. The picture on the right is blocked with the synthesized peptide.